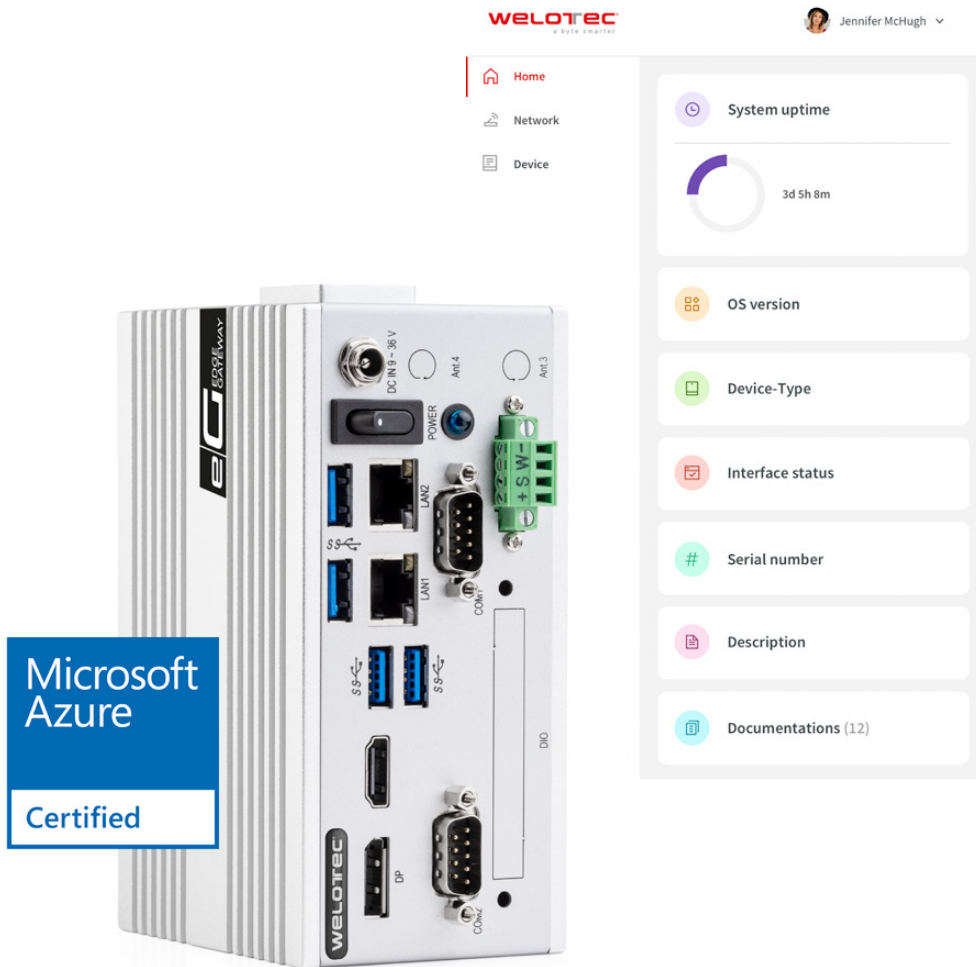


# Edge Gateway for Azure IoT Hub - EG600 Series

EDGE COMPUTING



## Edge Gateway for Azure IoT Hub - EG600 Series

- Fully integrated with Azure IoT Hub and Azure IoT Edge support
- Azure Device Provisioning Service (DPS) with TPM
- Container Runtime and support for Docker compose file
- Integrated Firewall, Routing, NAT, OpenVPN
- Intel Quad Core Processor, 8 GB RAM, 45 GB free memory
- 4G LTE connectivity

ARTICLE VARIANTS	EG602W	EG602L
Cellular	-	4G LTE
SIM Slots	-	1
Antenna	-	2x SMA(f)

# Edge Gateway for Azure IoT Hub - EG600 Series

PRODUCT FEATURES



## Cloud Integration

Seamless cloud integration for decentralized computing and deployment.



## 4G LTE

LTE standard for high transmission rates and optimal network coverage.



## Edge Computing

Easy and scalable system for applications directly at the Edge.



## Container Applications

Reliable development of container based applications.



## TPM

Integrated Trusted Platform Modul for secure device provisioning and authentication.



## Security

Integrated firewall fulfilling highest security standards.



## Operating System

Software environment for flexible data processing and storage.



## Device Management

Central rollout and management of mass deployments.

# Edge Gateway for Azure IoT Hub - EG600 Serie

## TECHNICAL DETAILS

GENERAL INFORMATION	
Type	Azure IoT Edge Gateway
Series	EG600
SOFTWARE	
Container Runtime	Docker cli / Docker compose / Moby Engine / Azure Edge Runtime
Security	Integrated Firewall / OpenVPN / TPM
Network	Routing / NAT / 4G LTE Cellular Management / Interface Management
CONFIGURATION	
Access	CLI access - serial or SSH
Configuration Export and Import	Network settings, OpenVPN, Azure Configuration, Firewall, Container
Central Management Software	SMART EMS (in process)
HARDWARE	
CPU	Intel Quad Core Atom x7-E3950
RAM	8 GB
Free Memory for Container and Data	45 GB
TPM	TPM 2.0 with TrEE 1.1
Gigabit Ethernet	2x RJ45
USB 3.0	4
Serial	1x RS-232 and 1x RS-485
POWER SUPPLY	
Input Voltage	9 to 36 V DC
Connector	Terminal Block or DC Jack
PHYSICAL CHARACTERISTICS	
Housing material	Steel / Aluminum
Ingress Protection	IP20
Dimensions (W x H x D)	64 x 140 x 92 mm
Weight	800 g
Mounting	DIN Rail
ENVIRONMENTAL	
Operating temperature range	-20 - +70 °C
Humidity	5 - 95 %